



Boston Public Market CREW – PSC Presentation

October 21, 2015

BPMA Timeline



2001

Boston Public Market Association formed.
Runs Two Seasonal Markets.

2011

Boston Public Market Commission issues RFP for Operator

2012

Association designated by Commonwealth to develop
Boston Public Market.

Partnership: BPMA +
Individual/Corporate investors +
Foundations +
City of Boston +
Commonwealth of Massachusetts (seed founder)

**Spring
2013**

New CEO, Liz Morningstar, solidifies business plan

**July
2013**

Design Phase begins

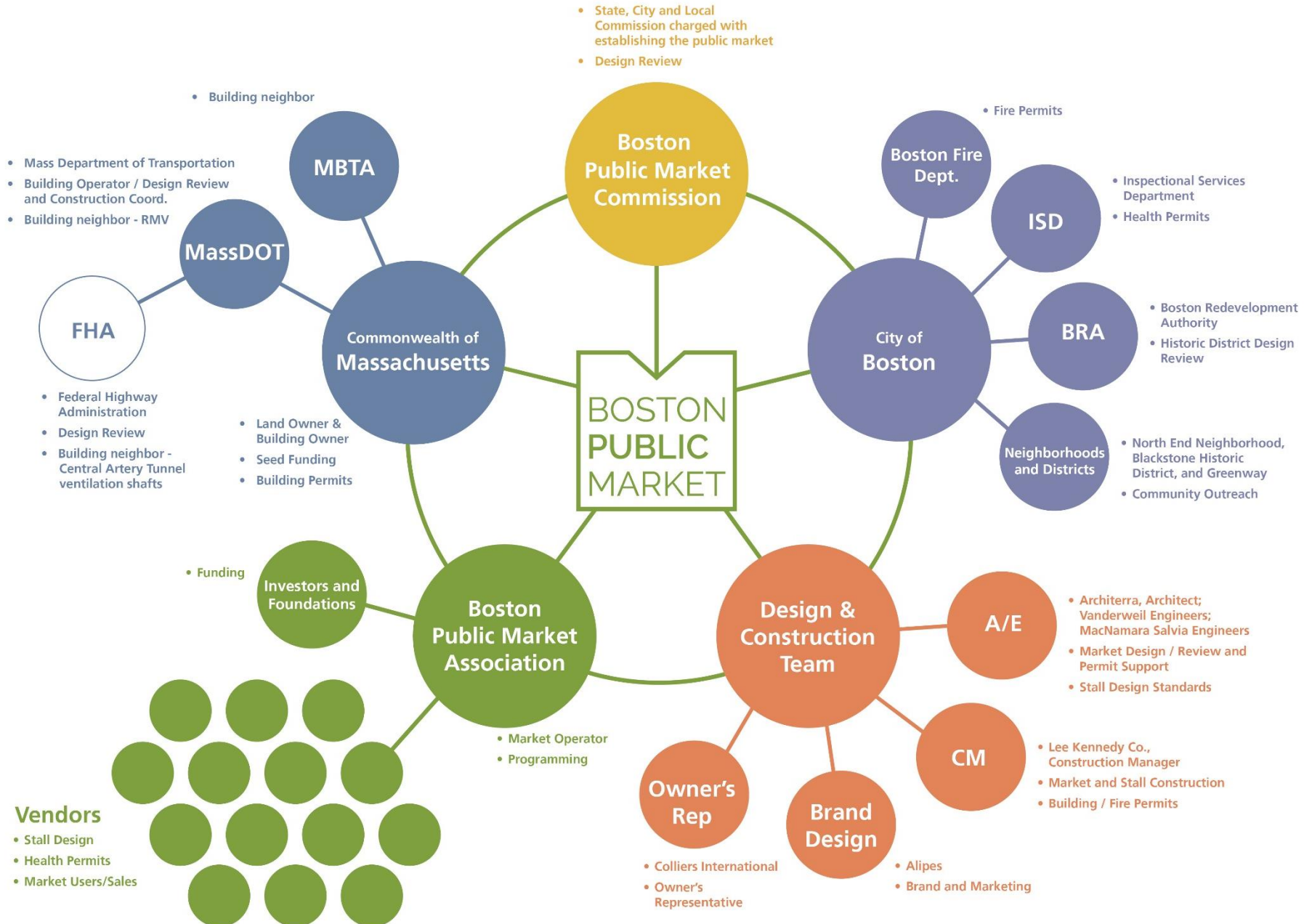
**October
2014**

Construction begins

**July
2015**

Grand Opening

Project Organization



Design Process



Look & Feel Options

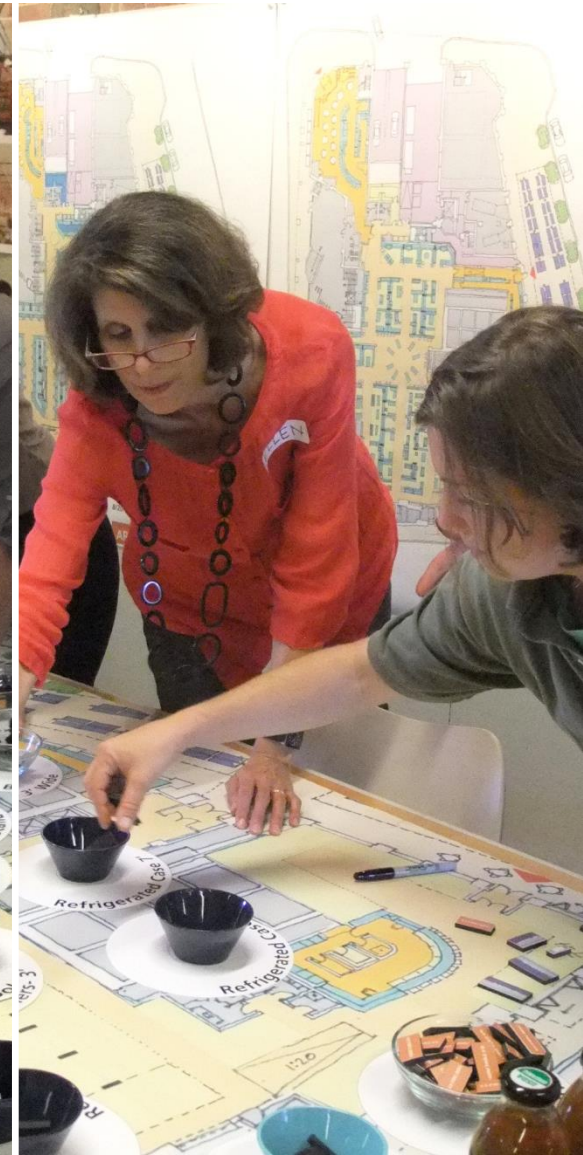
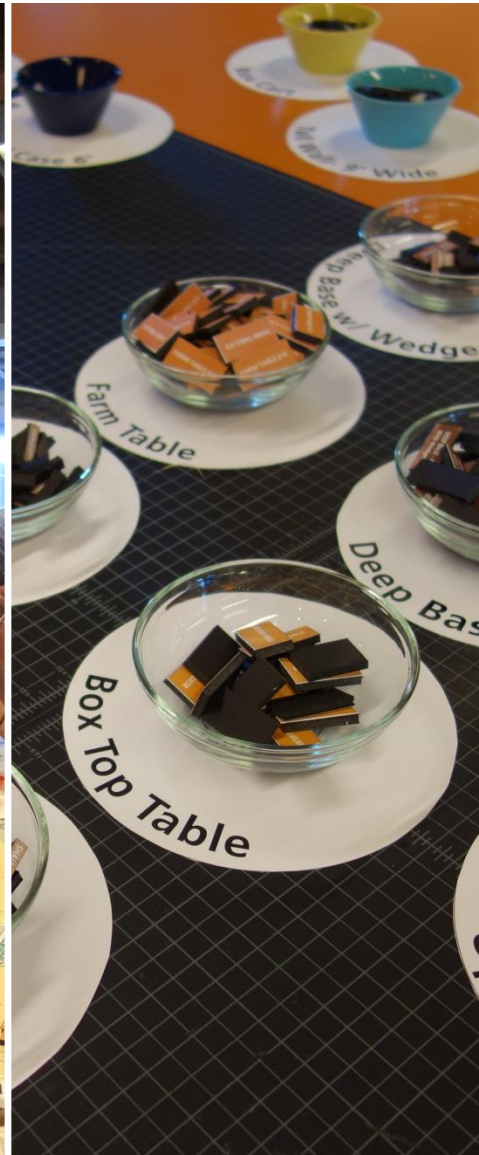


Site Investigations



Multidisciplinary Team

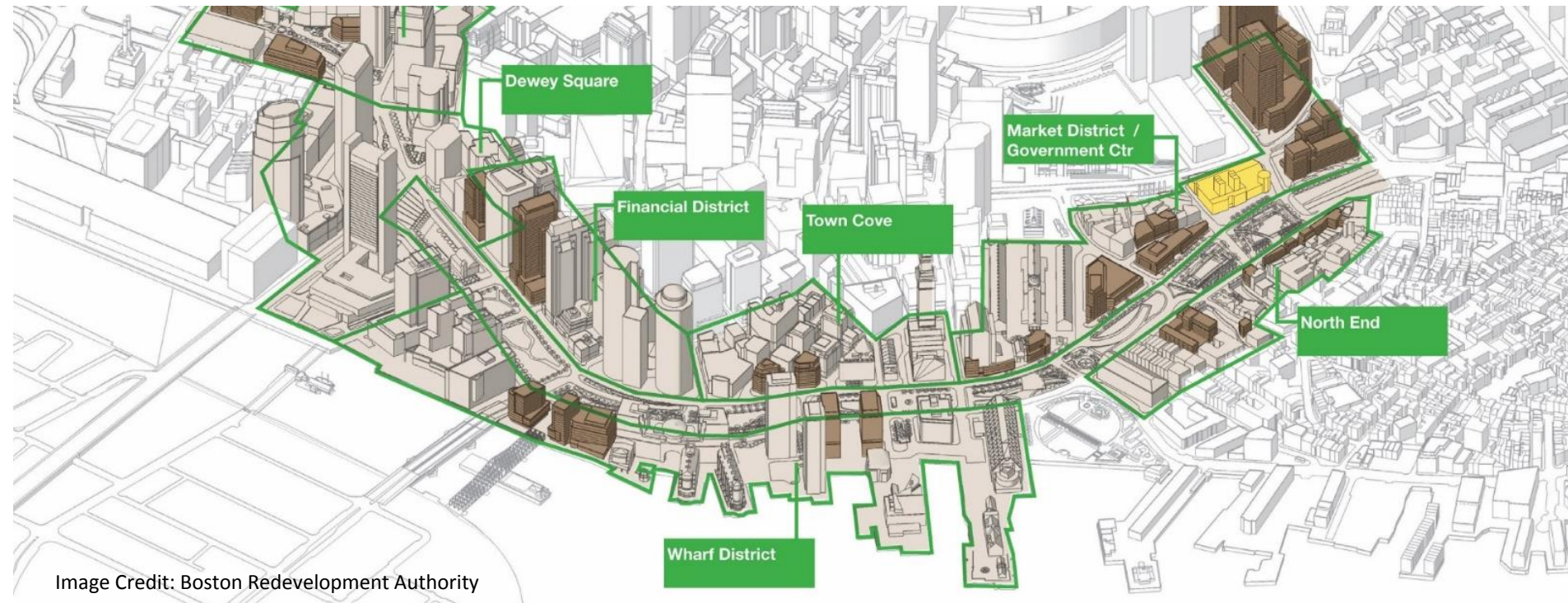
Vendor Workshop



Design Review and Community Outreach



Ideal Location



Existing Conditions







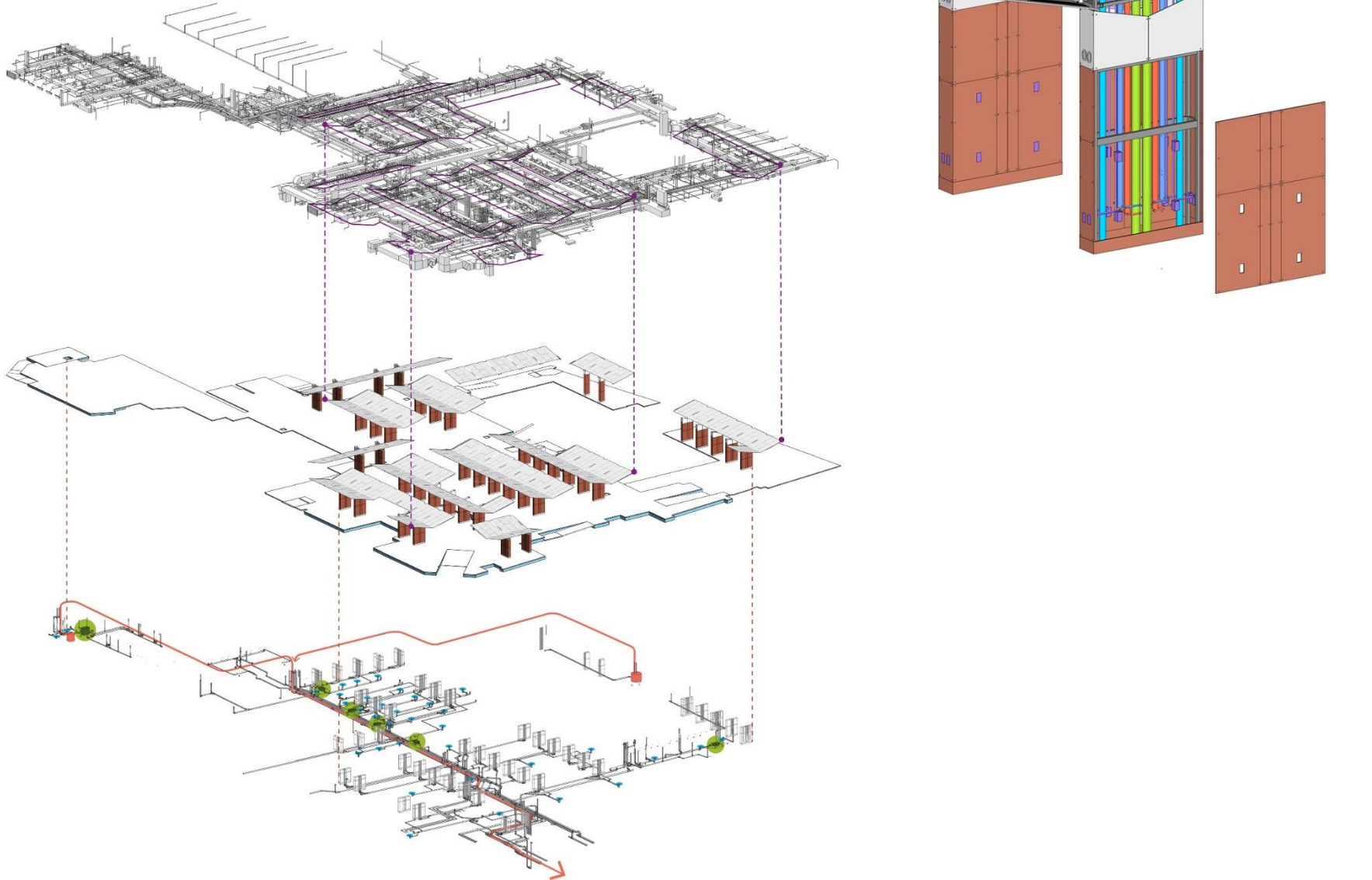


EXIT

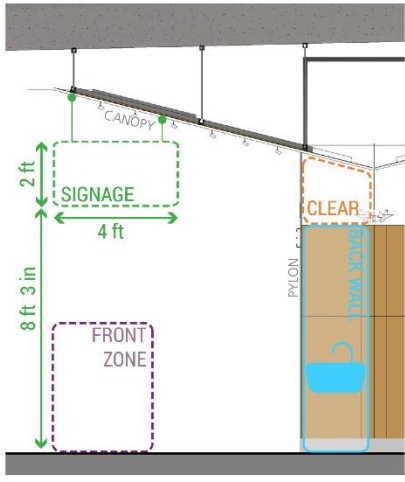
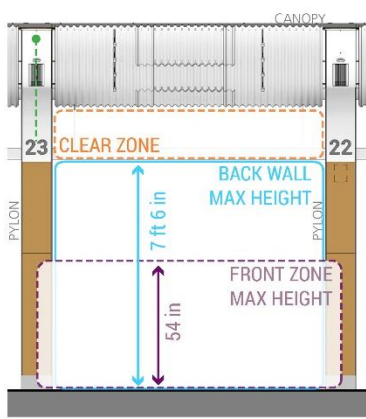
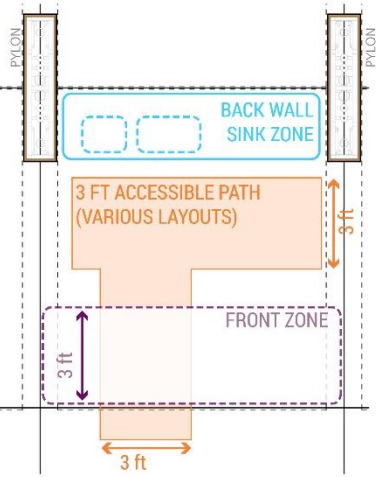
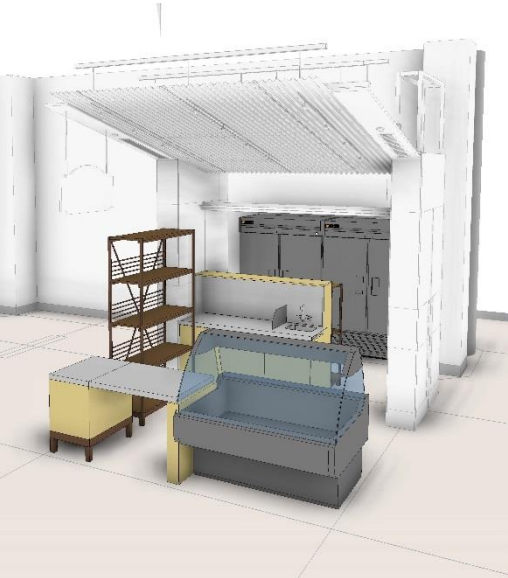
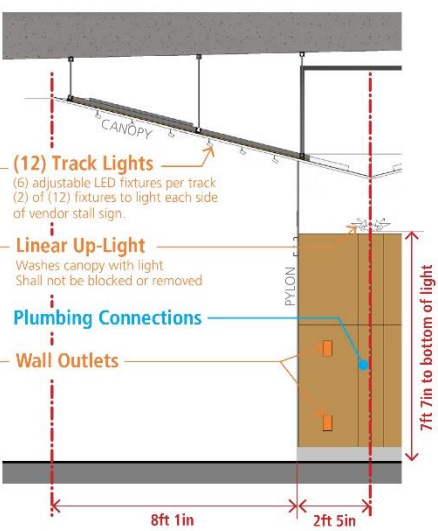
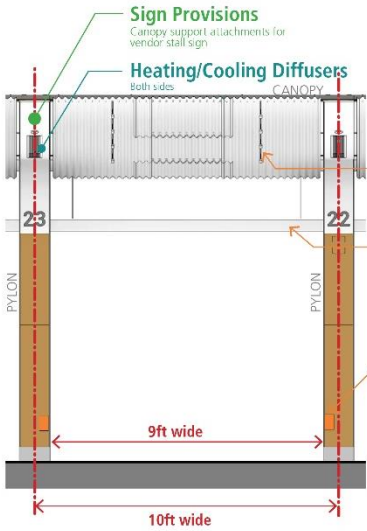
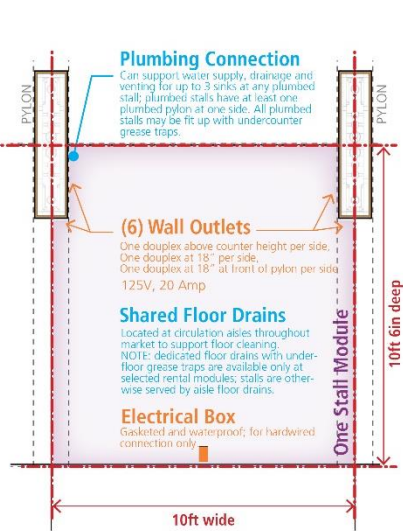
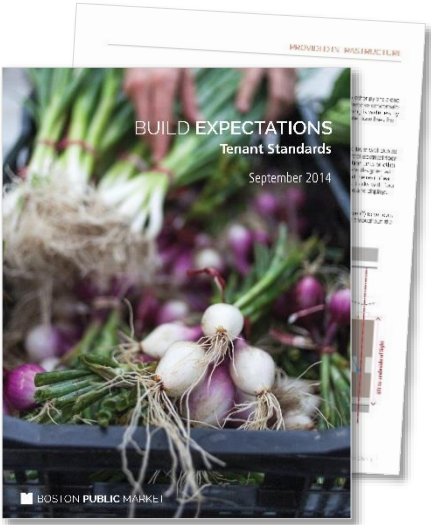
BEANTOWN
— PASTRAMI CO. —
HAND CARVED

APPLETON FARMS
EST. 1836 · IPSWICH · HAMILTON, MA
t
truffles

Infrastructure Layers



Tenant Standards



Directory



BOSTON PUBLIC MARKET

BAKERY

- 9 UNION SQUARE DONUTS
- 13 MAMADOU'S ARTISAN BAKERY

BEVERAGES

- 5 MOTHER JUICE
- 8 GEORGE HOWELL COFFEE
- 33 MASSACHUSETTS WINE SHOP
- 34 HOPSTERS ALLEY

DAIRY

- 7 CRESCENT RIDGE
- 16 CELLARS AT JASPER HILL
- 17 APPLETON FARMS
- 24 WOLF MEADOW FARM

MEAT

- 15 DANIELE
- 26 CHESTNUT FARMS
- 28 LILAC HEDGE FARM
- 30 STILLMAN QUALITY MEATS

PREPARED

- 20 INNA'S KITCHEN
- 22 BEANTOWN PASTRAMI CO.
- 25 NOODLE LAB
- 32 BOSTON SMOKED FISH CO.
- 41 BON ME

PRODUCE

- 1 HARLOW'S VERMONT FARMSTAND
- 2 RED APPLE FARM
- 18 CORNER STALK FARM
- 21 SILVERBROOK FARM
- 29 STILLMAN'S FARM
- 40 LAKESIDE ORGANICS
- 43 SIENA FARMS

SEAFOOD

- 27 RED'S BEST

SPECIALTY & OTHER PRODUCTS

- 4 TAZA CHOCOLATE
- 6 SOLUNA GARDEN FARM
- 10 MANGÉ
- 11 SWEET LYDIA'S
- 31 NELLA PASTA
- 36 Q'S NUTS
- 37 STOW GREENHOUSES
- 38 PETERMAN'S BOARDS AND BOWLS
- 39 BOSTON HONEY COMPANY
- 44 AMERICAN STONECRAFT

RESTROOMS

EXIT

PARKING GARAGE

MBTA STATION







