

APPLY FOR THE 2025 SCHOLARSHIP

Application Deadline February 28



REWARDING BENEFIT!

\$10,000 Scholarship

ARE YOU ELIGIBLE?



Female student in good standing currently enrolled in sophomore, junior, or senior year or a graduate program at an accredited college or university in New England



Demonstrates an interest in pursuing a career in commercial real estate through prior course work, internships and/or other experiences

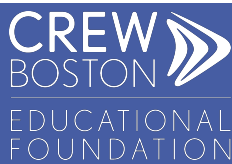


Applicant must be willing to have her name, school and town/city appear in announcements by the CREW Boston Educational Foundation and/or CREW Boston

Consider a career in one of these commercial real estate fields:

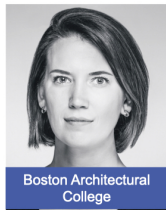
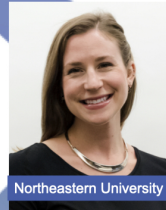
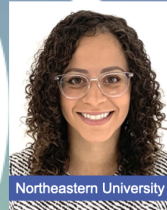
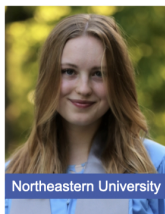
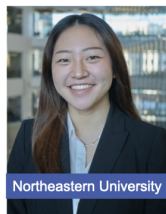
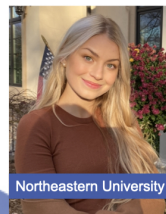
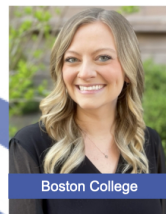
| | |
|---------------------------------------------|-------------------------------------|
| Accounting | Investment Management |
| Acquisitions/Dispositions | Investor Relations |
| Appraisal | Land Use Planning and Zoning |
| Architecture | Land Surveying |
| Asset Management | Law |
| Brokerage | Market Research |
| CRE Business Development | Project Management |
| Commercial Insurance | Property Management |
| Commercial Lending | Public Sector |
| Construction Management/General Contracting | Quasi-Governmental |
| Corporate Real Estate | Transportation and Port Authorities |
| Cost Segregation | Real Estate Development |
| Economic Development | Relocation Services, |
| Engineering Environmental | Corporate |
| Facility Management | Risk Management |
| Finance | Title/Escrow |
| CRE Human Resources | |
| Interior Design/Space Planning | |

Visit www.crewboston.org/Foundation/Scholarship for complete details



CREW Boston Educational Foundation is dedicated to promote the advancement and parity of women in the commercial real estate industry by providing education and scholarships to female students interested in pursuing a career in commercial real estate.

Past Scholarship Recipients



25+ scholarships awarded since 2010